

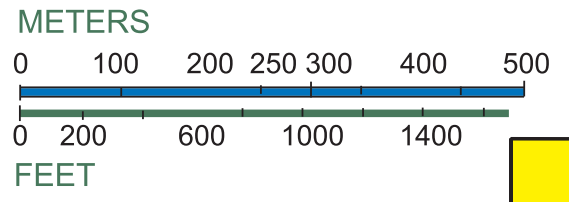
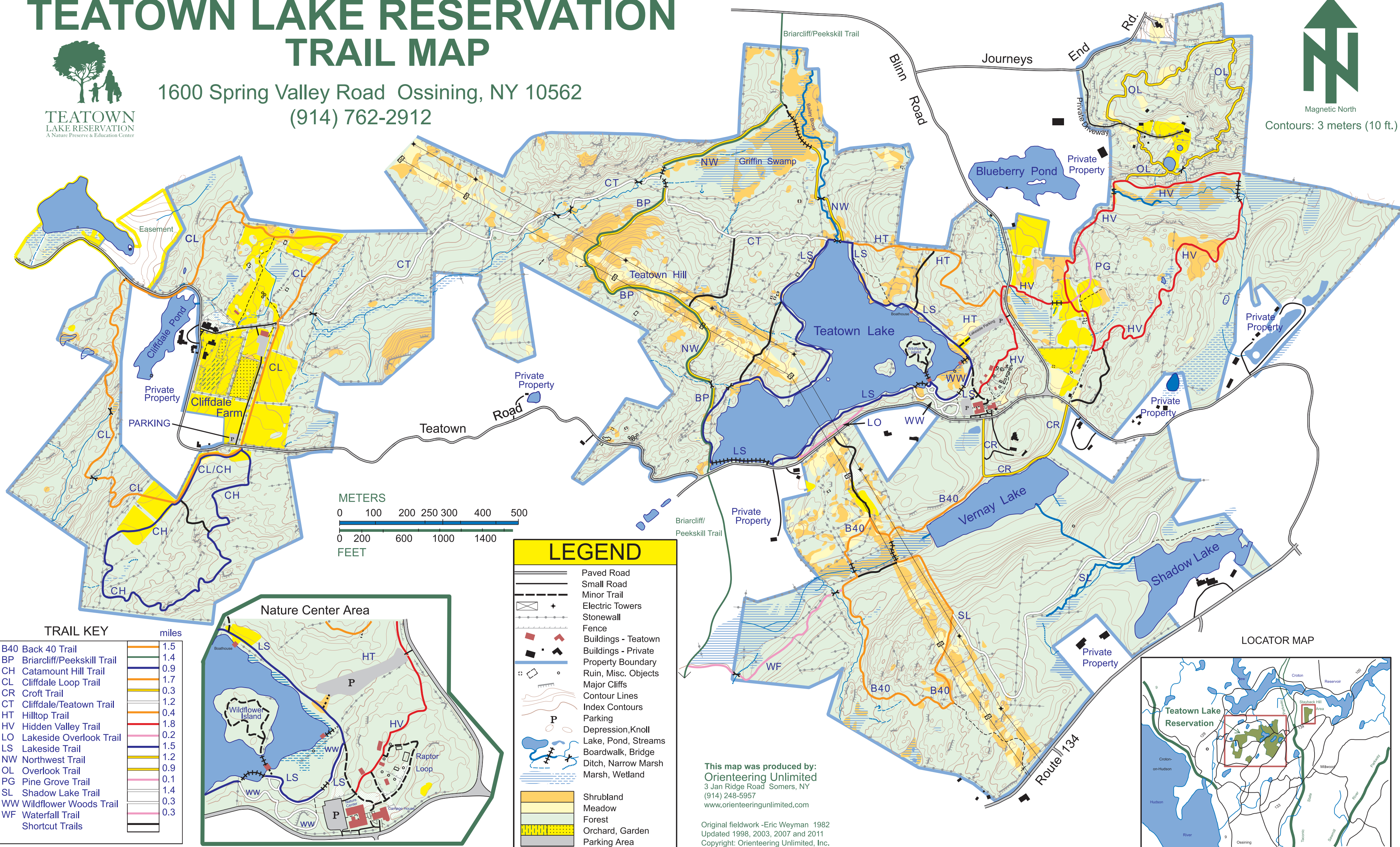
# TEATOWN LAKE RESERVATION TRAIL MAP



1600 Spring Valley Road Ossining, NY 10562  
(914) 762-2912



Contours: 3 meters (10 ft.)

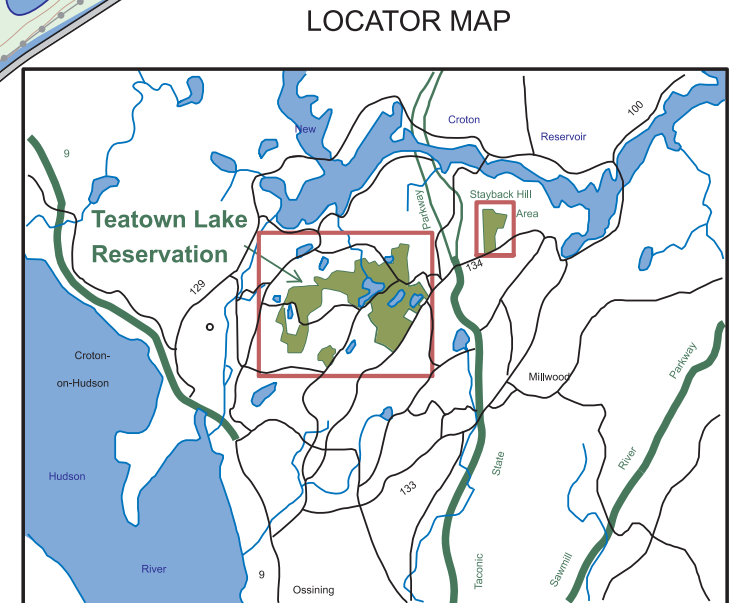
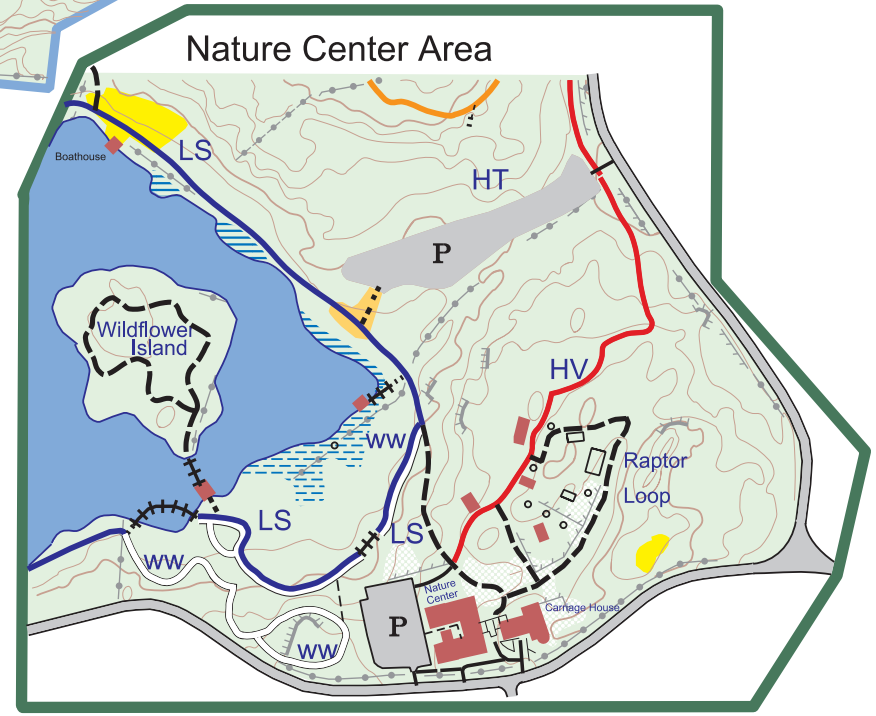


### LEGEND

	Paved Road
	Small Road
	Minor Trail
	Electric Towers
	Stonewall
	Fence
	Buildings - Teatown
	Buildings - Private Property
	Ruin, Misc. Objects
	Major Cliffs
	Contour Lines
	Index Contours
	Parking
	Depression, Knoll
	Lake, Pond, Streams
	Boardwalk, Bridge
	Ditch, Narrow Marsh
	Marsh, Wetland
	Shrubland
	Meadow
	Forest
	Orchard, Garden
	Parking Area

### TRAIL KEY

Trail Name	Distance (miles)
B40 Back 40 Trail	1.5
BP Briarcliff/Peekskill Trail	1.4
CH Catamount Hill Trail	0.9
CL Cliffdale Loop Trail	1.7
CR Croft Trail	0.3
CT Cliffdale/Teatown Trail	1.2
HT Hilltop Trail	0.4
HV Hidden Valley Trail	1.8
LO Lakeside Overlook Trail	0.2
LS Lakeside Trail	1.5
NW Northwest Trail	1.2
OL Overlook Trail	0.9
PG Pine Grove Trail	0.1
SL Shadow Lake Trail	1.4
WW Wildflower Woods Trail	0.3
WF Waterfall Trail	0.3
Shortcut Trails	



This map was produced by:  
**Orienteering Unlimited**  
3 Jan Ridge Road Somers, NY  
(914) 248-5957  
www.orienteeingunlimited.com

Original fieldwork -Eric Weyman 1982  
Updated 1998, 2003, 2007 and 2011  
Copyright: Orienteering Unlimited, Inc.